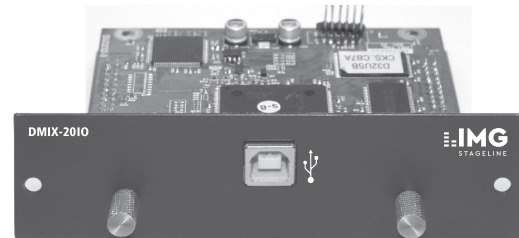


DMIX-2010

User's Manual



*MODULE FOR DATA TRANSMISSION
VIA PORT USB2.0 (480 mb/s)*



Introduction

1. Function description

DMIX-2010 module use the USB2.0(480Mb/S)to transmit the audio data , which can provide the 24 bit audio sampling data and 64 channels(32 input channels and 32 output channels). It can be applied on digital products.

- Audio loop low delay, it can record and play for 32 channels at the same time;
- USB2.0 I/O port(B type port), 480Mb/S;
- Sampling frequency: 48KHz/24bit;
- Support the XP/WIN7/WIN8/OSX system(32bit/64bit);
- Rated voltage:5VDC;
- Max input current: 420mA;
- Mechanical size: 94mm*96mm ; USB I/O port extended 3mm.

2. Specification

- Background noise : <-100dB;
- Distortion : $\leq 0.01\%$ At 1KHz ;

3. Channel name display

The corresponding relation between PC and MIXER is as following:

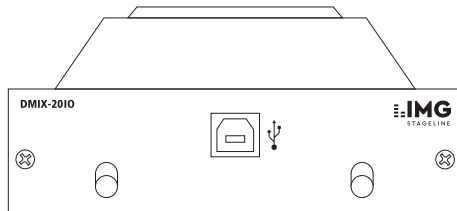
PC NAME	MIXER
Input 1-20	CH1-20
Input 21-24	AUX 1-4
MAIN-L, MAIN-R, SUB-1, SUB-2	SUB1-4
SUB3-4	MAIN
AUX1-2	SOLO

All the names can be renamed as you like.

For the details please check 11 item in page 8.

4. Interface function instruction

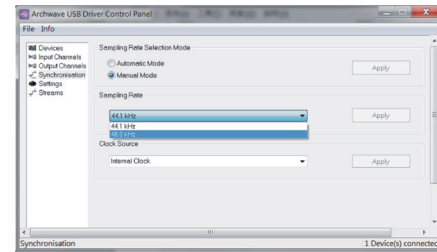
The USB port that connects **DMIX-2010** and PC can play and record in 32 channels.



Driver configuration

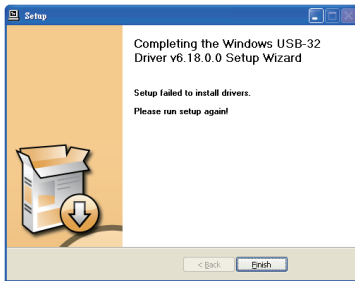
1. sample rate setting

- 1). Connect the PC with device and Powered on it. click the icon for driver software on the right corner , then you can make below settings;
- 2). Choose "Synchronisation";
- 3). Choose "Manual Mode";
- 4). Choose the sampling rate 48kHz for hardware; Note: only 48kHz can work here.
- 5). Click "Apply";
- 6).Choose default setting for others.



Driver install

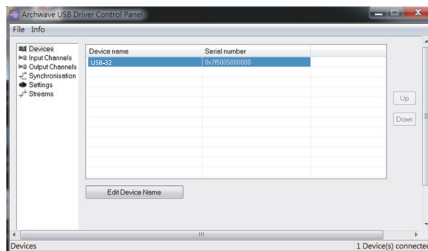
9. Click "finish" on next interface to finish the installation.



10. Click the icon on the right corner after step9.

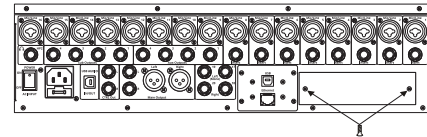


11. After the above operation, you will see below interface, which means the installation is finished and you can use it. Double click USB-32 under Device name to rename it. the same way to rename input channels and output channels.

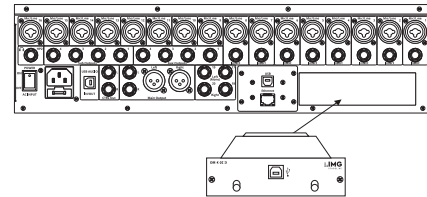


Installation

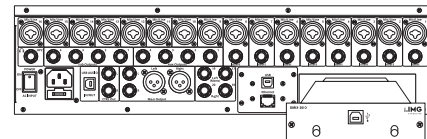
1. Disassemble the 2 screws by the screw driver following the below picture.



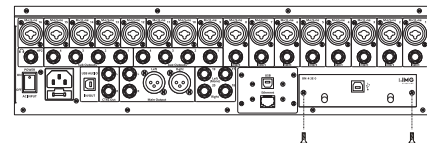
2. Disassemble the Module from MIXER.



3. Insert the Module on the slots following the below picture and the Module must be on the middle of the slot.



4. Push the module and make it matched with the whole panel .



5. Assemble the 2 screws following the below picture.

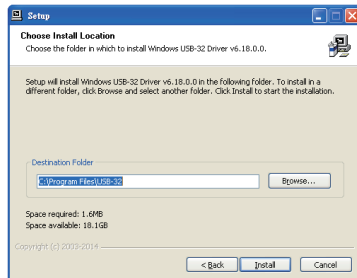
Driver install

The below instruction is for USB Windows driver installation (Windows XP, WIN 7/8). The OSX operating systems is no need driver.

1. Extract the files "USB32_Driver_V6_18_0.rar"
2. Power on DMIX-20 but disconnect the USB with PC.
3. Double click the subgroup for "USB32_Driver_V6_18_0" to installation.
4. After the above operation, you will see the below interface. Then click "Next" to enter into next interface.

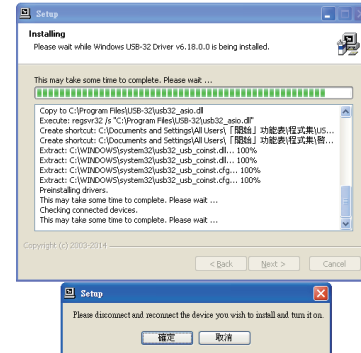


5. Choose the default C disc to save and click "Install".



Driver install

6. The program start to install and will have below interface. Please click "confirm".



7. Connect PC with DMIX-20

8. Click "NEXT" on next interface.

